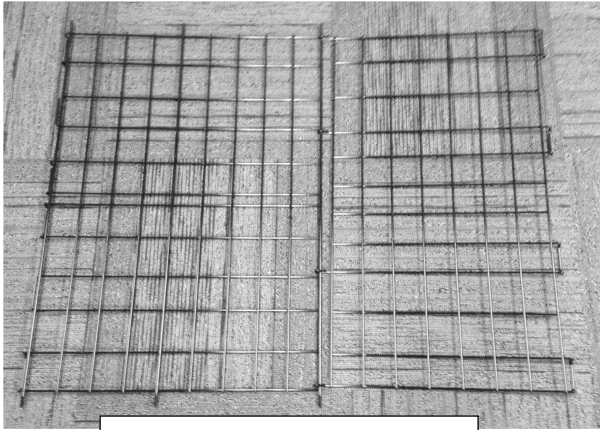
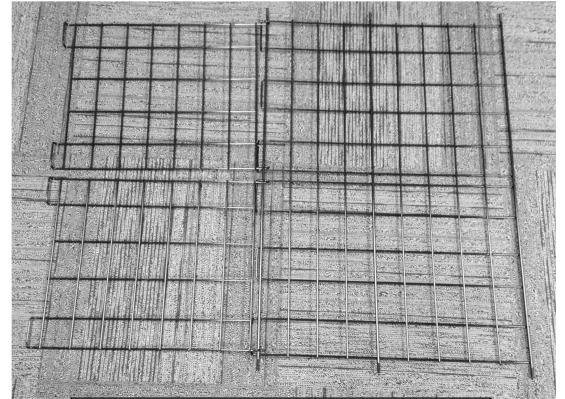


W12348 Split Equipment Cart Assembly Instructions



Bottom with Side Panel Attached



Split Top with Side Panel Attached

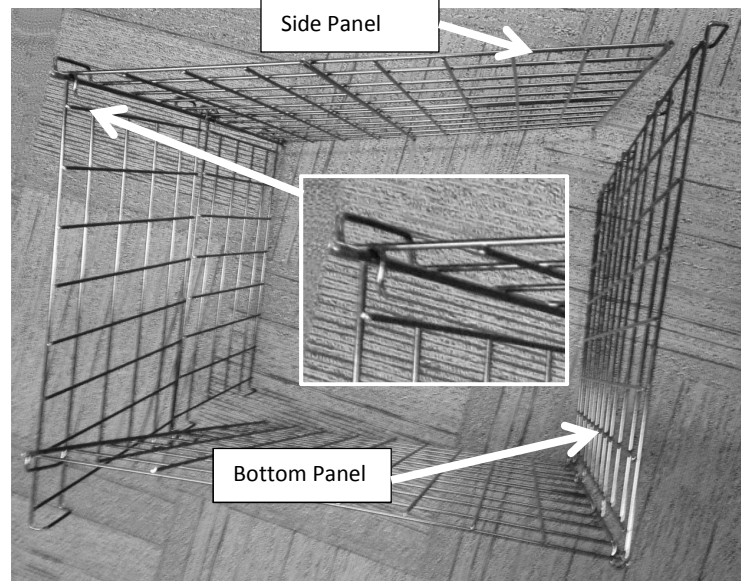
1. Open box and remove all panels. Find the two large panels shown above that will form the sides, top and bottom of the cart. Stand those two panels on end and next to each other as shown in the photo to the right. The open ends of the bent wires that form the hinges between the panels will be on the interior of the cart.



Image 2

2. Slide the bent loops on the Bottom panel of the cart through the openings at the bottom of the grid of the Side

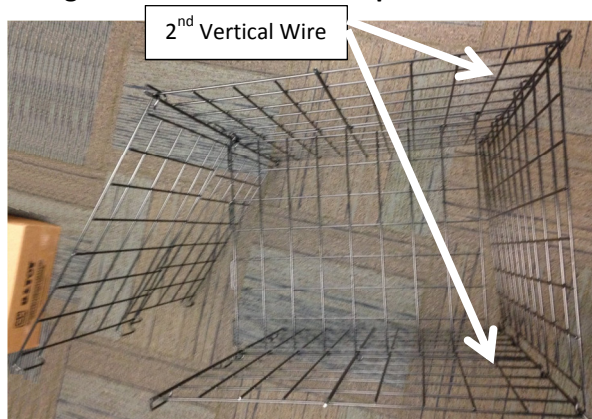
Panel. (image 2)



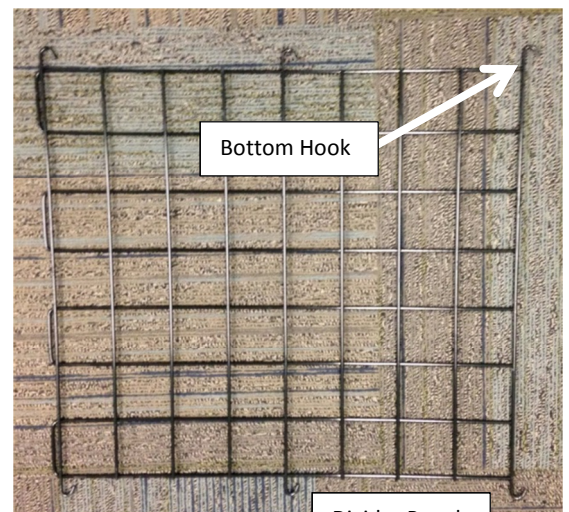
Side Panel

Bottom Panel

2. Find the Divider Panel and position it shown to the right. With the divider panel positioned horizontally, move it to the middle of the side panel panels. The middle of the side panels is noted by having 2 steel wires about 1" apart. Position the bottom hook beside the 2nd vertical wire on each side panel. Then slide the panel into position such that each of the hooks on the divider panel slides around a corresponding vertical wire in the side panels.

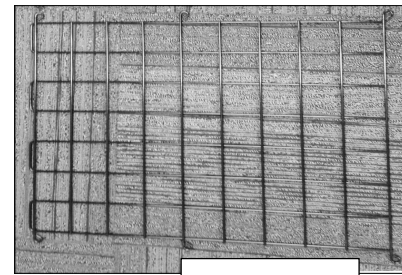
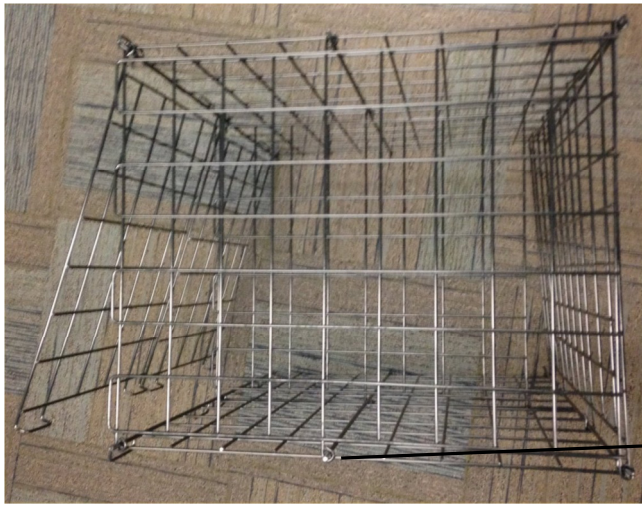


2nd Vertical Wire

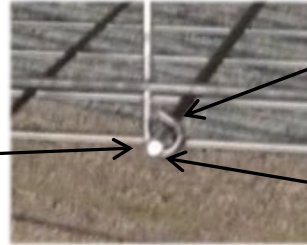


Bottom Hook

Divider Panel



End Panel

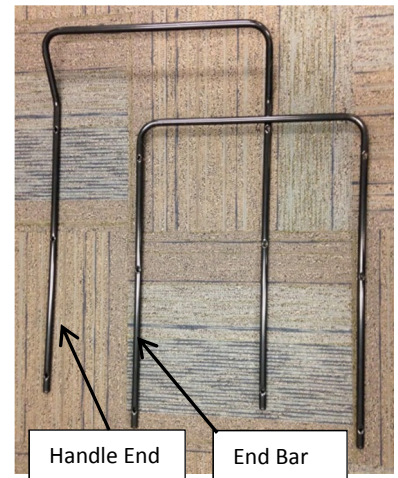


Loop

Threaded Rod

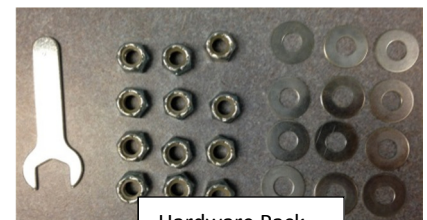
3. Position an end panel on the top onto the top of the cart such that all 6 of the loops on the sides of the end panels fit over the threaded rods on one side of the cart.

4. Locate the End Bar and slide it down over the same 6 threaded rods. The holes in the End Bar have one side that is depressed, the depressed side should face up. Place a flat washer on top of each threaded rod and then a lock nut. Tighten the lock nuts until they bottom out using a wrench or pliers. Note that the wrench included with the hardware pack is for tightening the wheels and will not work for the lock nuts.



Handle End

End Bar



Hardware Pack

5. Flip the cart over onto the opposite end. Position the Handle End over the 6 threaded rods, add flat, washers and lock nuts. Tighten all nuts until they bottom out.



6. Locate the 4 casters with threaded connections. Insert a cast into the open end of the Handle End tubing. Finger tighten, then use the included wrench to completely tighten. Repeat with a 2nd wheel.

7. Flip the cart over and insert and tighten wheels into the two open ends of the End Bar.

8. Flip cart onto its wheels and give yourself a pat on the back, your cart assembly is now complete.

