

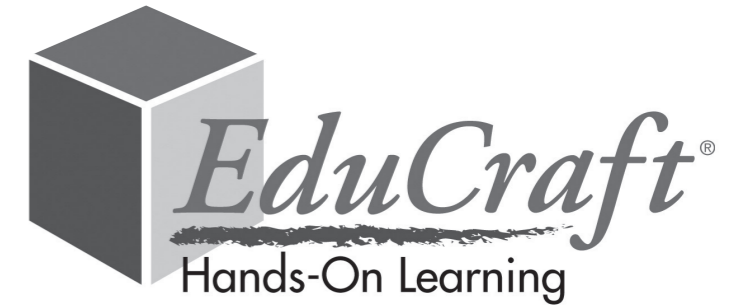
GP3305

Galactic Space Triptych Collaborative Craft Kit (Pk/1)

Reorder Number

GP3305

1.2



Project Ideas • Cross Curricular Links • Activity Sheets



# PLAY. LEARN. SHARE.

[ssww.com/blog](http://ssww.com/blog)

## Find ideas on the S&S Blog:

- Crafts & DIY
- Senior Activities
- Summer Camp
- Education & Classroom



**MAKING IT EASY** to SAVE MORE on your next order!

# 15% OFF

No \$ Minimum

Please mention Offer Code: **M2467**

Limit one per order.

May not be combined with other offers or bid or contract pricing.

See [ssww.com](http://ssww.com) for Offer Terms and Conditions.

We reserve the right to terminate this offer at any time without notice.

Call Toll-Free  
**1-800-243-9232**

Online:  
**SSWW.COM**

Email:  
**cservice@ssww.com**

FAX:  
**1-800-566-6678**



© Copyright 2019 S&S® Worldwide Inc. All rights reserved. No part of this project may be copied or duplicated without the express written permission of S&S Worldwide.

Kit may contain silicone gel packets, which should be removed before use.

## Galactic Space Triptych Collaborative Craft Kit (Pk/1)

PLEASE READ ALL INSTRUCTIONS BEFORE STARTING

**AGE GROUP: 6 and up**  
**PROJECT TIME: 60+ minutes**

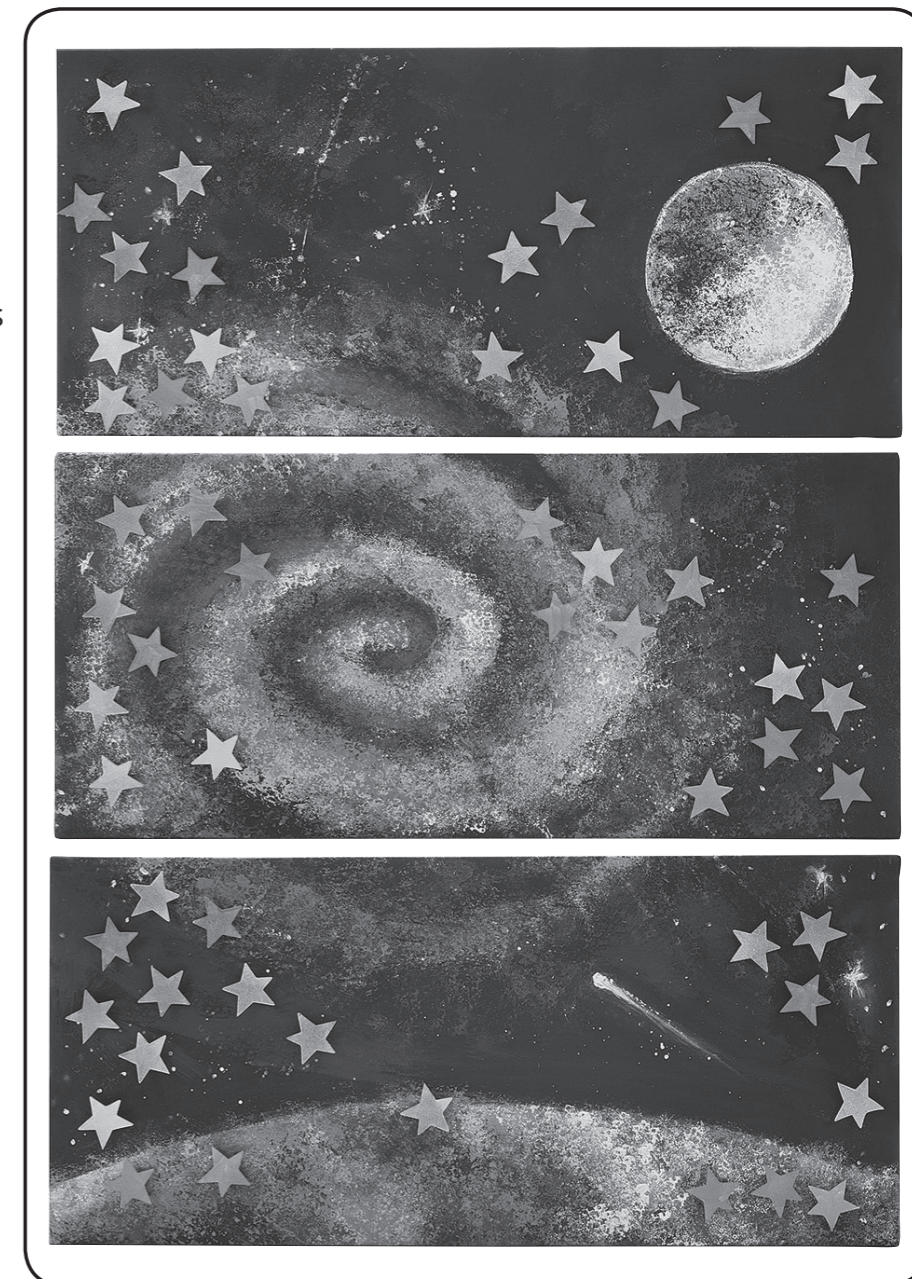
### YOUR KIT CONTAINS:

- Printed Galactic Space Canvas Panels
- Die Cut Canvas Stars
- Metallic Acrylic Paint
- Assorted Acrylic Paint
- Brushes
- Paint Cups
- 3D Glue Dots
- Glitter Glue
- Sponges

### YOU WILL NEED:

- Cups of Water
- Paper Towels
- Flat Work Surface

**NOTE:** This project can be divided over a 2 day period or longer depending on the size of the group



## NOTE TO THE INSTRUCTOR:

### *Working in a Collaborative Setting*

Collaborative art projects offer a group the opportunity to create a lasting project suitable for display in a larger setting. Creating a Collaborative art piece takes Patience, Respect, Teamwork and Community building as the work is made. We encourage you to integrate these 4 ideas into your creative process.

Here are some reasons why:

**PATIENCE:** When creating a collaborative piece, people participating must be patient. Depending on how you set up the activity, the project may not be completed in 1 day, or the way 1 person envisions it. And it can't be rushed. A project like this is a great opportunity for those who may be a little less patient, with some direction, to slow down and enjoy the creative process.

**RESPECT:** Everyone works at a different pace, likes different colors and artistic styles. A collaborative piece allows everyone to participate. Everyone must work together to make the finished piece a success.

**TEAM BUILDING:** Working together as a team to create a piece, similar to how a sporting team works together in a game, results in a great finished piece. You as the instructor are there similar to a coach, to provide guidance and direction as needed.

**COMMUNITY:** The group creating the piece is a small community but the larger community benefits from the finished artwork. Family and community members may see the artwork on display and benefit from the interaction with the people who created it. A space benefits from the finished piece being displayed and helping to create a positive community environment.

This project has been designed for a group size between 4 and 25 people to participate, depending on how the activity is set up. There are plenty of supplies included!

This group art project can serve small or large groups during a single scheduled activity or over a period of time. A little planning on your part as the instructor can reap significant benefits to the group and the larger community.

### *PROJECT PLANNING*

This project can be painted to fit any themed season/event or decorated with any color palette to match a facility's décor or branding. Be sure to discuss the color theme or ideas with the group ahead of time to make the painting activity run smoothly.

## PREPARATION INSTRUCTIONS:

1. Divide your group as needed.
2. Cut each sponge into 4 pieces.
3. Premix paint colors (see our suggestions below)

### PAINT TIPS & COLOR MIXING IDEAS:

You can mix custom colors or use the variety of colors provided. The beauty of acrylic paint is once it's dry you can paint directly over any mistakes for a fresh start. If mixing custom colors for large background areas, make sure to mix enough paint upfront.

Here are some custom color combinations that we mixed and used in the cosmos swirl:

- Red Acrylic Paint + Silver Metallic Acrylic Paint
- Blue Acrylic Paint + Gold Metallic Acrylic Paint
- Red Acrylic Paint + Copper Metallic Acrylic Paint
- Green Acrylic Paint + Gold Metallic Acrylic Paint

**NOTE:** You will be primarily using the sponge pieces to create this project. Don't press too hard with the sponges – you just need a light touch!

## PAINTING THE CANVAS PANELS:

### PLANET AND MOON:

1. Use clean sponges to sponge and layer paint colors (in your color scheme) on the planet and the moon. We kept the moon a little brighter by sponging a layer of white and a layer of silver metallic.
2. Let dry.

**TIP:** To speed up drying time, have an adult dry the canvas panels with a hair dryer!

### COSMOS SWIRL:

- If you don't even want the swirl that is printed on the canvas, you can sponge paint the black/blue paint combination right over it.

- If you want the Cosmos Swirl, first determine how big you want it to be.

1. To paint the Cosmos, we sponged acrylic paint colors right from the bottles (no mixing) and then went over that layer with some of our premixed color combinations to blend and soften the cosmos swirl.
2. In a paint cup, use a paint brush and slightly thin some white acrylic paint with a couple drops of water. With the paint brush loaded with the white paint, carefully tap the brush handle while holding it above the canvas panels to spatter the paint on the panels.
3. Let dry.

## DIE CUT STARS:

1. Have your group sponge paint the stars. We prefer the metallic acrylic paints for this step but use whatever suits the color scheme you have designed.
2. Once all of the stars and canvas panels are completely dry, you can begin to layer the star shapes onto the canvas. Shuffle the pieces around to find a composition you like before you stick everything into place using the 3-D glue dots. If you make a mistake, the 3-D dots are repositionable with a little effort but they may leave a residue on the canvas.

**NOTE:** The stars may curl slightly after coloring. Simply bend the stars the opposite way to flatten out.

**Instructor Tip:** If you are working with a large group, you may want to arrange the star shapes yourself after the activity is completed.

## GLITTER GLUE DETAILS :

1. Once the canvas panels and stars are dry, brush assorted glitter glue colors on areas of canvas and stars for added sparkle! Let dry.
2. Once your project is complete, hang the three panels approximately an inch or so apart—making sure the top and bottom edges are even.

*See finished sample on our website for color and composition suggestions.*