

Crazy Creatures: Chameleon (Pk/12)

PLEASE READ ALL INSTRUCTIONS BEFORE STARTING



YOUR KIT CONTAINS:

- Foam Pieces
- Glue

AGE GROUP: 7 and up

PROJECT TIME: 30 minutes

See illustration on reverse side.

INSTRUCTIONS:

1. Glue the black eye-parts to the white eye parts and set aside to dry.
2. Glue 3 stripes to each side of the BACK as shown, being careful not to cover any slots, and allow to dry.
3. Join the head to the body by gently pulling the arrows on the HEAD through the slots on the BODY (arrow goes through **slot a**, **arrow b** goes through **slot b** and so on).
4. Ask an adult to help you carefully thread the FRONT LEGS through **slot x** on the BACK so there is a leg on each side of the BACK.
5. Ask an adult to help you attach the BACK LEGS to **slot y** in the BACK in exactly the same way as you attached the FRONT LEGS.
6. Join BACK to the BODY using the arrows and **slots d, e, and f**.
7. Attach the CREST to the BODY by first slotting it into the notch on the BACK, then pulling the arrows through **slots g and h** on the body.
8. Glue the eyes onto the head.

MAKING IT EASY to SAVE MORE on your next order!

15% OFF

No \$ Minimum

Please mention Offer Code: **M2467**

Limit one per order.

May not be combined with other offers or bid or contract pricing.
See ssww.com for Offer Terms and Conditions. We reserve the right to terminate this offer at any time without notice.

Contact Information:

Call Toll-Free: **1-800-243-9232**

Online: **SSWW.COM**

Email: **cservice@ssww.com**

FAX: **1-800-566-6678**



WARNING:

CHOKING HAZARD - Small parts. Not intended for children under 3 years.

SUFFOCATION HAZARD - To avoid danger of suffocation, keep plastic bags away from babies and children. Do not use bags in cribs, carriages, or playpens.

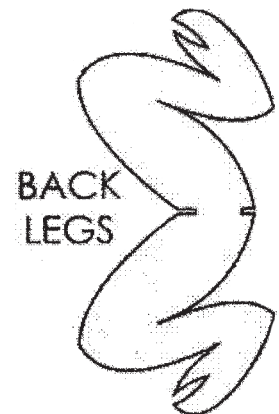
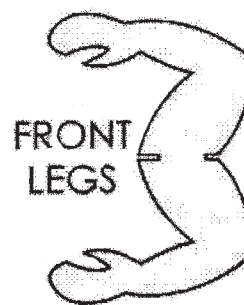
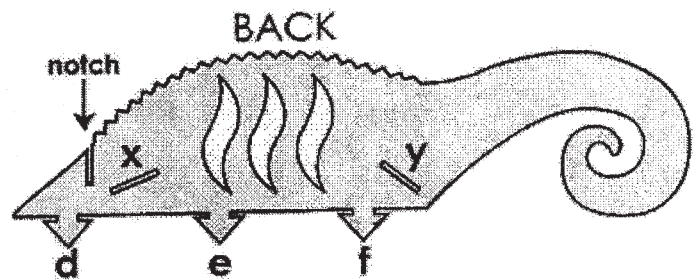
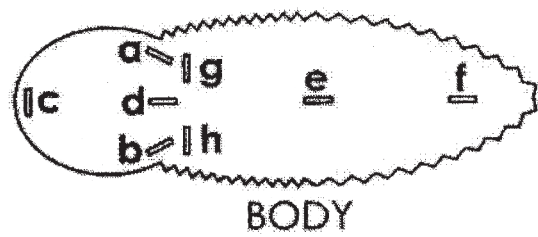
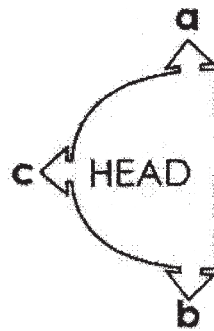
SILICONE HAZARD - Kit may contain silicone gel packets, which should be removed before use.

S&S[®] Worldwide

© Copyright 2016 S&S[®] Worldwide Inc. All rights reserved. No part of this project may be copied or duplicated without the express written permission of S&S Worldwide.

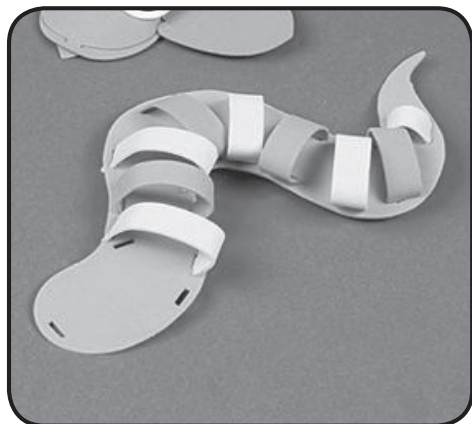
Kit may contain silicone gel packets, which should be removed before use.

Crazy Creatures: Chameleon



Crazy Creatures: Snake (Pk/12)

PLEASE READ ALL INSTRUCTIONS BEFORE STARTING



YOUR KIT CONTAINS:

- Foam Pieces
- Glue

AGE GROUP: 7 and up

PROJECT TIME: 30 minutes

See illustration on reverse side.

INSTRUCTIONS:

1. Glue the black eye-parts to the white eye parts and set aside to dry.
2. Join the head to the body by gently pulling the arrows on the HEAD through the slots on the BODY (arrow a goes through **slot a**, **arrow b** goes through **slot b** and so on).
3. Arrange the STRIPES as shown in the diagram and join them to the body using the arrows.
4. Glue the TONGUE to the head end of the BODY (under **slot c**).
5. Glue the eyes onto the head.

MAKING IT EASY to SAVE MORE on your next order!

15% OFF

No \$ Minimum

Please mention Offer Code: **M2467**

Limit one per order.

May not be combined with other offers or bid or contract pricing.
See ssww.com for Offer Terms and Conditions. We reserve the right to terminate this offer at any time without notice.

Contact Information:

Call Toll-Free: **1-800-243-9232**

Online: **SSWW.COM**

Email: cservice@ssww.com

FAX: **1-800-566-6678**



WARNING:

CHOKING HAZARD - Small parts. Not intended for children under 3 years.

SUFFOCATION HAZARD - To avoid danger of suffocation, keep plastic bags away from babies and children. Do not use bags in cribs, carriages, or playpens.

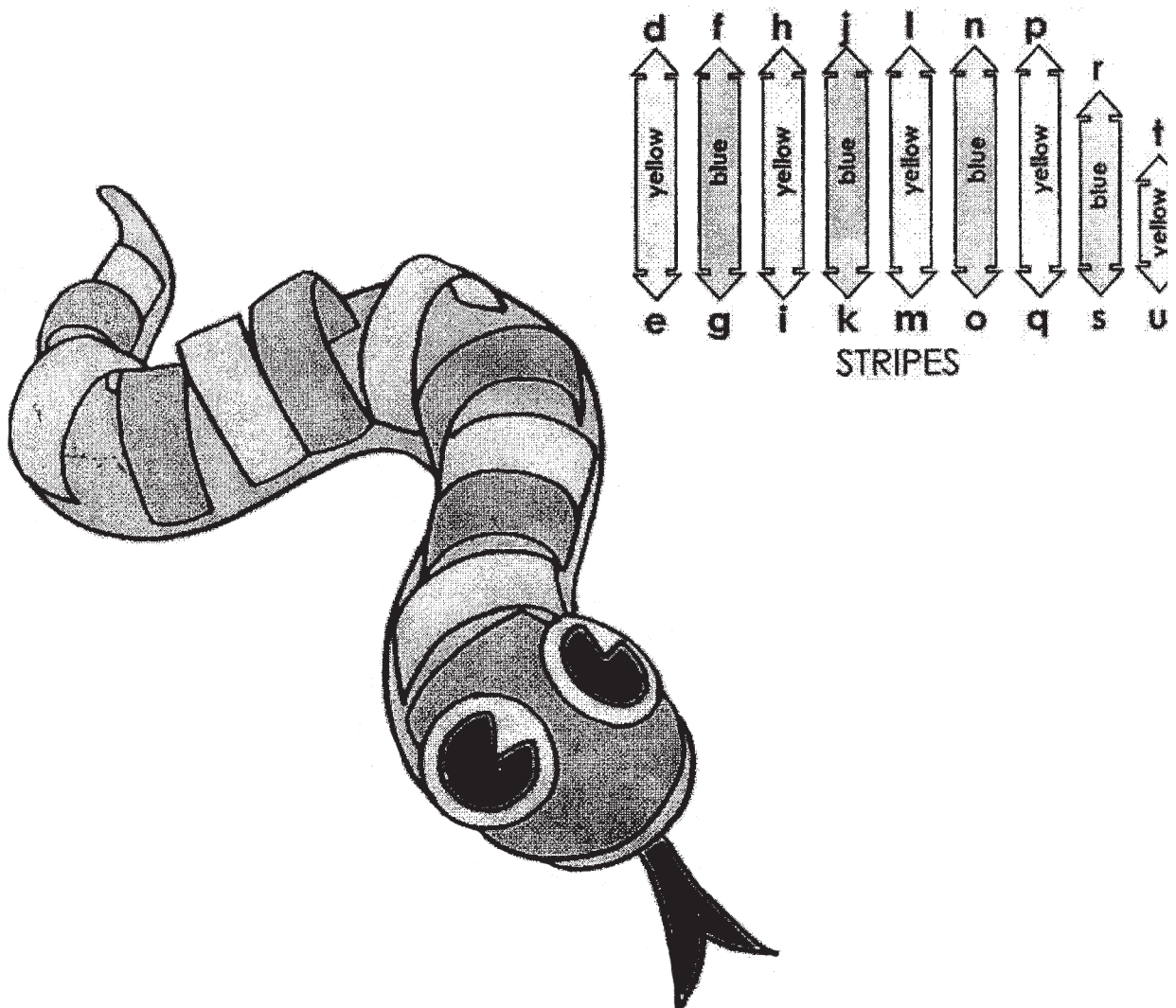
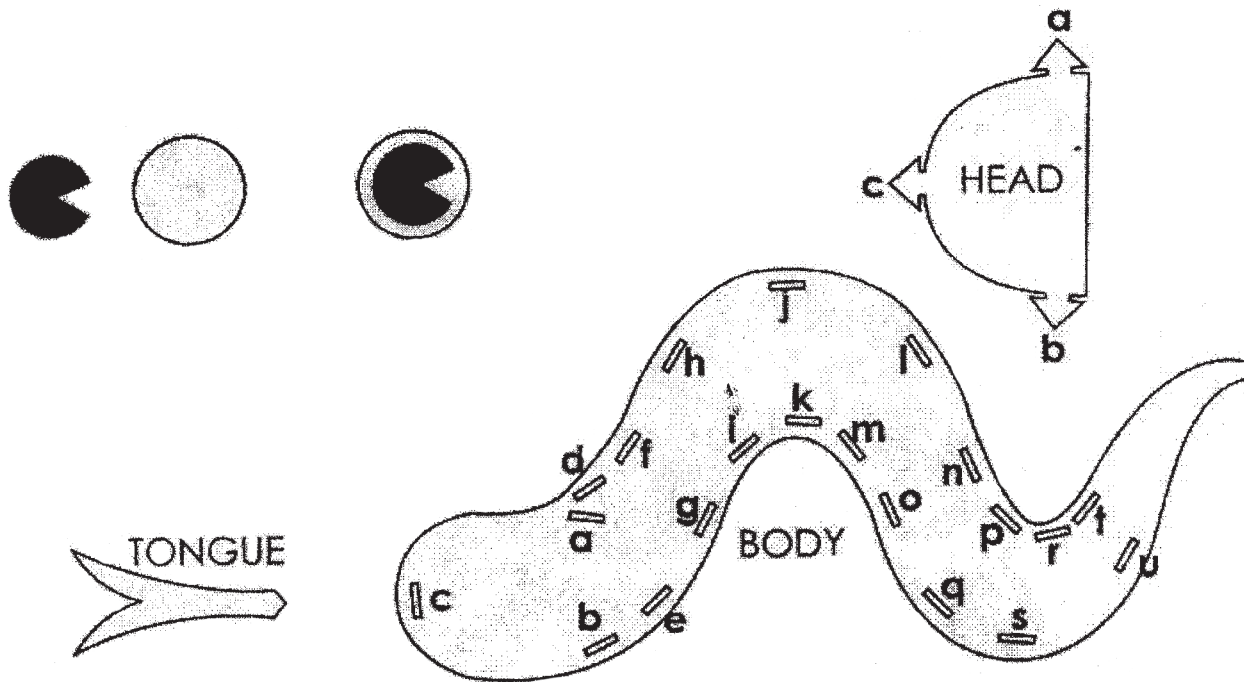
SILICONE HAZARD - Kit may contain silicone gel packets, which should be removed before use.

S&S[®] Worldwide

© Copyright 2016 S&S[®] Worldwide Inc. All rights reserved. No part of this project may be copied or duplicated without the express written permission of S&S Worldwide.

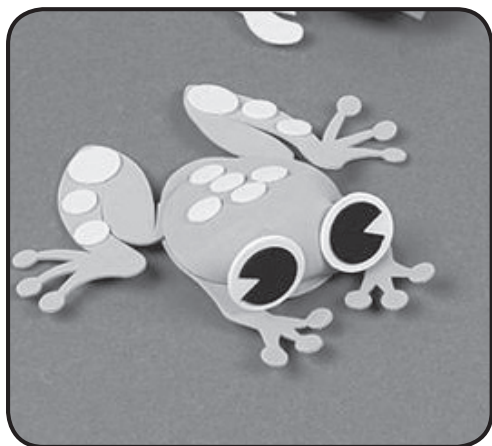
Kit may contain silicone gel packets, which should be removed before use.

Crazy Creatures: Snake



Crazy Creatures: Frog (Pk/12)

PLEASE READ ALL INSTRUCTIONS BEFORE STARTING



YOUR KIT CONTAINS:

- Foam Pieces
- Glue

AGE GROUP: 7 and up
PROJECT TIME: 30 minutes

See illustration on reverse side.

INSTRUCTIONS:

1. Glue the black eye-parts to the white eye parts and set aside to dry.
2. Join the body together by gently pulling the arrows on the HEAD and BACK through the slots on the BODY (**arrow A** goes through **slot a**, **arrow b** goes through **slot b**, **arrow C** goes through **slot c**).
3. Thread the LEGS in between the BACK and the BODY and pull the knee parts over the TOP as shown on the reverse side. Insert **arrow D** into **slot d**.
4. Glue the eyes onto the HEAD and decorate the Frog with the yellow foam spots.

MAKING IT EASY to SAVE MORE on your next order!

15% OFF

No \$ Minimum

Please mention Offer Code: **M2467**

Limit one per order.

May not be combined with other offers or bid or contract pricing.
See ssww.com for Offer Terms and Conditions. We reserve the right to terminate this offer at any time without notice.

Contact Information:

Call Toll-Free: **1-800-243-9232**

Online: **SSWW.COM**

Email: cservice@ssww.com

FAX: **1-800-566-6678**



WARNING:

CHOKING HAZARD - Small parts. Not intended for children under 3 years.

SUFFOCATION HAZARD - To avoid danger of suffocation, keep plastic bags away from babies and children. Do not use bags in cribs, carriages, or playpens.

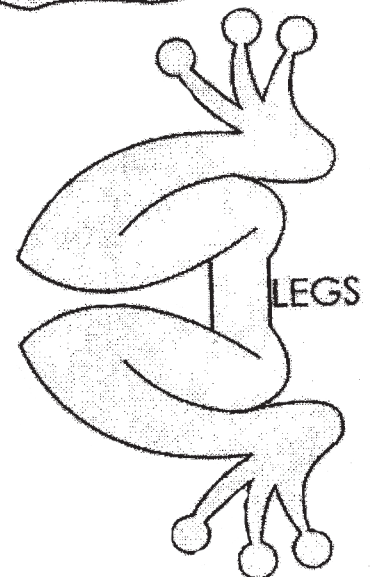
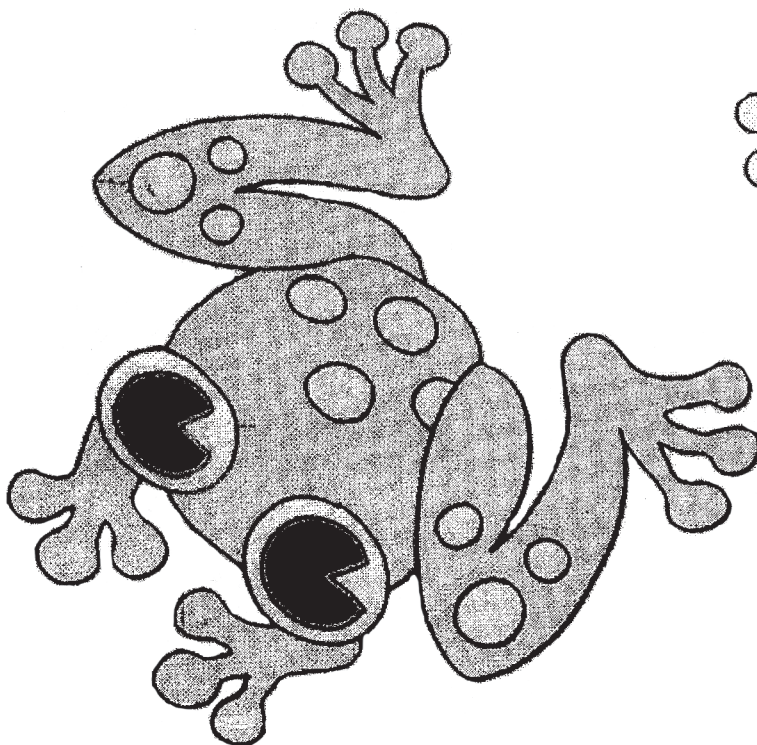
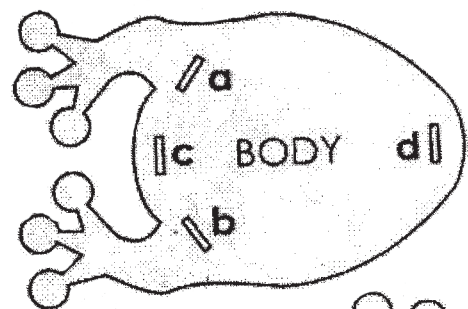
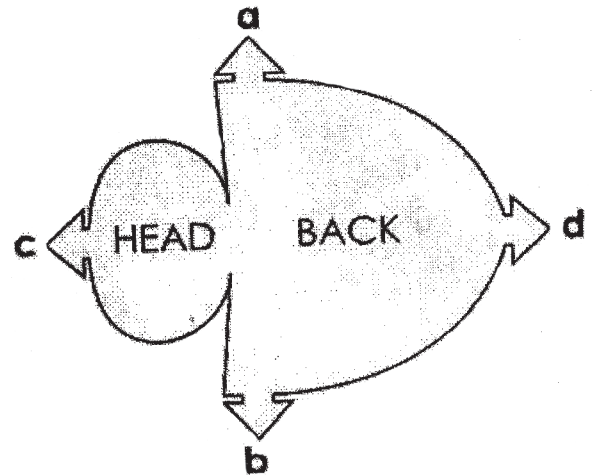
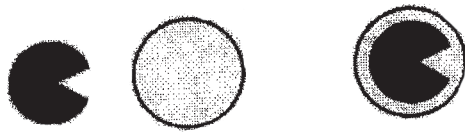
SILICONE HAZARD - Kit may contain silicone gel packets, which should be removed before use.

S&S[®] Worldwide

© Copyright 2016 S&S[®] Worldwide Inc. All rights reserved. No part of this project may be copied or duplicated without the express written permission of S&S Worldwide.

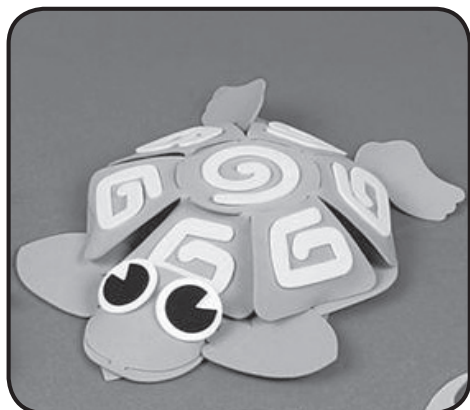
Kit may contain silicone gel packets, which should be removed before use.

Crazy Creatures: Frog



Crazy Creatures: Turtle (Pk/12)

PLEASE READ ALL INSTRUCTIONS BEFORE STARTING



YOUR KIT CONTAINS:

- Foam Pieces
- Glue

AGE GROUP: 7 and up

PROJECT TIME: 30 minutes

See illustration on reverse side.

INSTRUCTIONS:

1. Glue the black eye-parts to the white eye parts and set aside to dry.
2. Glue the spiral shapes to the SHELL as shown and allow to dry.
3. Join the head to the body by gently pulling the arrows on the HEAD through the slots on the BODY (**arrow A** goes through **slot a**, **arrow B** goes through **slot b** and so on).
4. Join the FRONT LEGS to the BODY using **arrows J & K** into **slots j** and **k**.
5. Join the BACK LEGS to the BODY in exactly the same way as the FRONT LEGS using **arrows L & M** into **slots l** and **m**.
6. Join the SHELL to the BODY using the arrows and slots indicated, making sure you match the letters shown on the diagrams on the reverse side.
7. Glue the eyes onto the head.

MAKING IT EASY to SAVE MORE on your next order!

15% OFF
No \$ Minimum

Please mention Offer Code: **M2467**

Limit one per order.

May not be combined with other offers or bid or contract pricing.
See ssww.com for Offer Terms and Conditions. We reserve the right to terminate this offer at any time without notice.

Contact Information:

Call Toll-Free: **1-800-243-9232**

Online: **SSWW.COM**

Email: cservice@ssww.com

FAX: **1-800-566-6678**



WARNING:

CHOKING HAZARD - Small parts. Not intended for children under 3 years.

SUFFOCATION HAZARD - To avoid danger of suffocation, keep plastic bags away from babies and children. Do not use bags in cribs, carriages, or playpens.

SILICONE HAZARD - Kit may contain silicone gel packets, which should be removed before use.

S&S[®] Worldwide

© Copyright 2016 S&S[®] Worldwide Inc. All rights reserved. No part of this project may be copied or duplicated without the express written permission of S&S Worldwide.

Kit may contain silicone gel packets, which should be removed before use.

Crazy Creatures: Turtle

