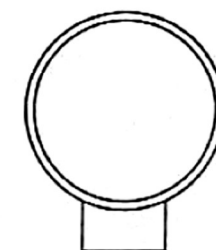
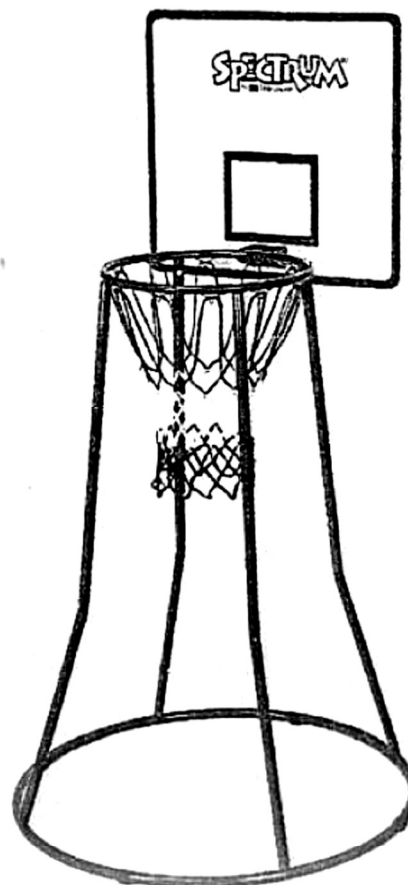
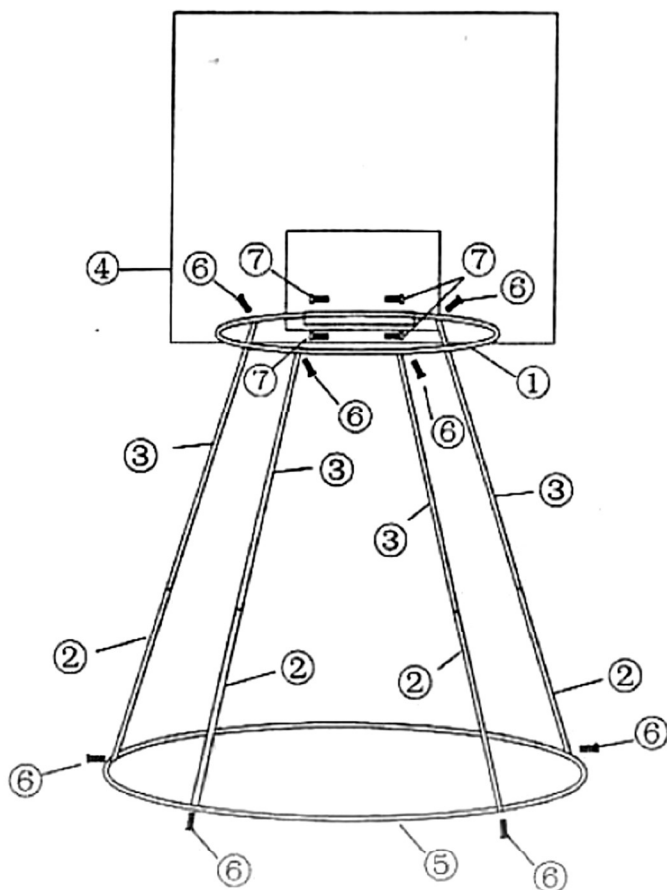


W4260 Mini Steel Basketball Goal with Backboard - Assembly Instructions

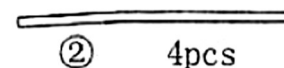


WARNING:

CHOKING HAZARD -- Small parts
Not for children under 3 yrs.



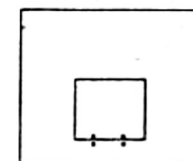
① 1pcs



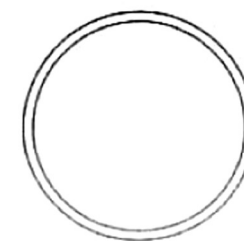
② 4pcs



③ 4pcs



④ 1pcs



⑤ 1pcs

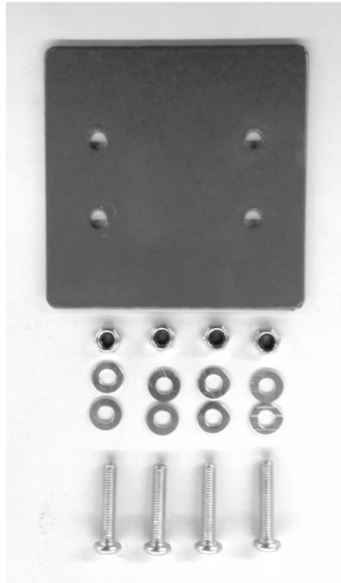


⑥ 8pcs



⑦ 4pcs

W4260 Mini Steel Basketball Goal with Backboard - Assembly Instructions (page 2 of 2)



Hardware Required (included)

- 1 - Backplate
- 4 - Lock Nuts
- 8 - Washers
- 4 - Screws

1. Insert the top 2 screws with a washer on them from inside of the backboard support that is attached to the rim (image #1).
2. Holding the screws from step one in place, slide the top two holes in the backboard (with the logo facing the rim) over the two screws just installed (image 2)
3. Slide a washer over the remaining two screws and push those from the inside of the backboard support through the backboard (image 3).
4. Slide the backplate over the 4 screws (image 4)
5. Place a washer and then a nut over onto the screws and finger tighten.
6. Using the included allen wrench and wrench (or a screw driver fitted with a 10mm socket head), tighten all nuts until they are secure against the backplate and there is no wobble in the backboard (image 5).

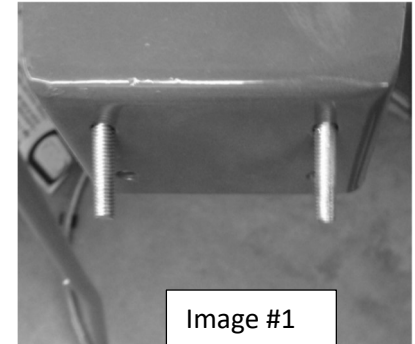


Image #1

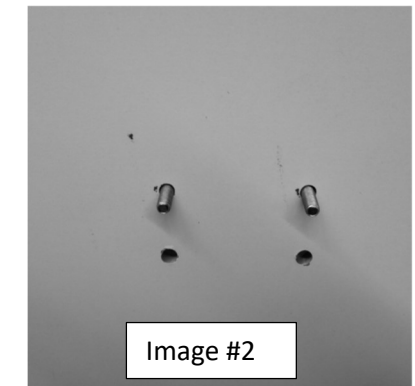


Image #2

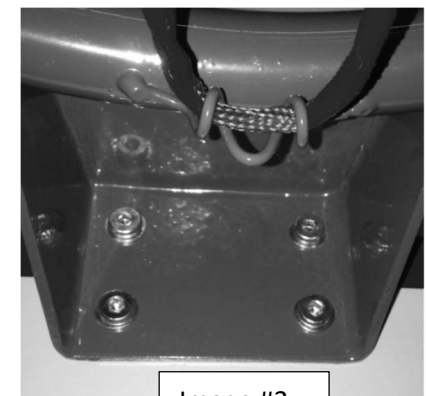


Image #3



Image #5



Image #4