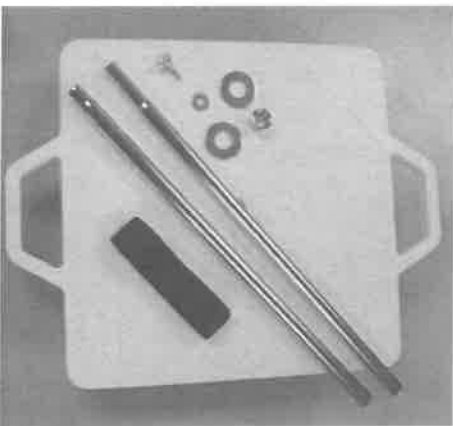


W6074 Scooter Stacker Assembly Instructions



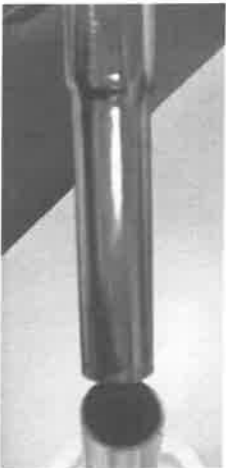
- Contents:**
- 1 – 16” Scooter with Handles
 - 1 – Scooter Strap
 - 1 – Bottom Pole with short reduced area and threaded insert
 - 1 - Top Pole with long reduced area and end cap
 - 1 – Scooter Insert with flange
 - 1 - Small Washer
 - 2 – Large Washers
 - 1 – Screw with wing nut top

Step 1 – Place one large washer over the hole in the center of the scooter. Then place the insert down into the washer and hole in the scooter.



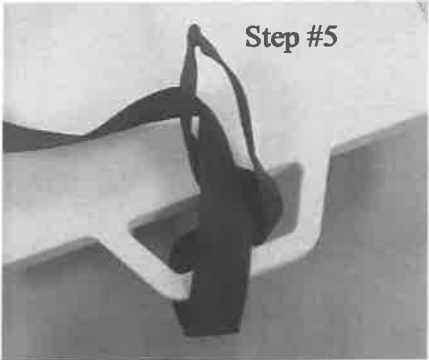
Step 2 – Slide the bottom pole inside the insert and washer. Turn scooter on its side, holding the previously position items in place.

Step 3 – Slide the small washer, then the remaining larger washer over the wing nut screw. Thread the screw into the bottom pole securely.



Step 4 – Flip the scooter onto its wheels and slide the top pole down into the bottom pole.

Step 5 – Position one end of the scooter strap through the hand and thread the other end of the strap through the loop in the strap.



S&S Worldwide
www.ssw.com
pe.ssw.com